

Calne Area Board

End of Year Report

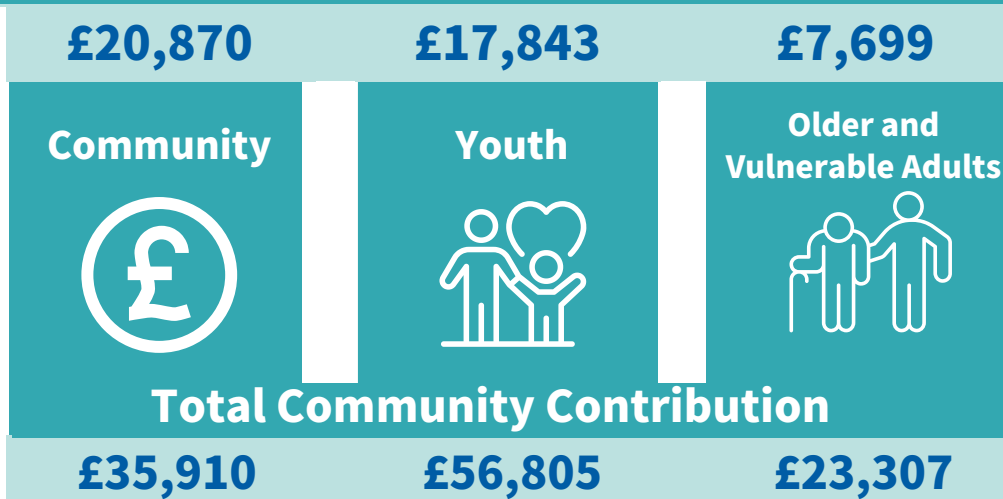
April 2023 - March 2024



Area Board Investment

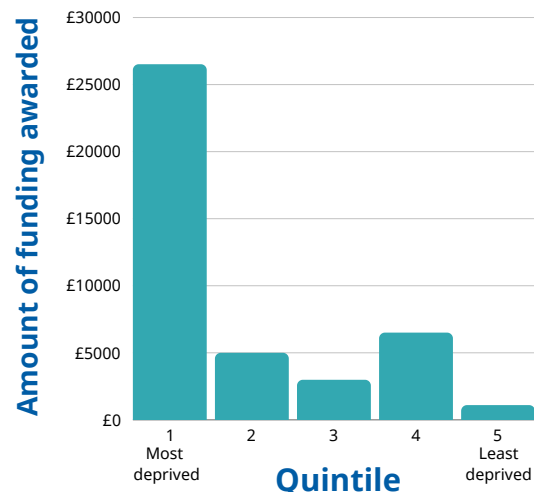
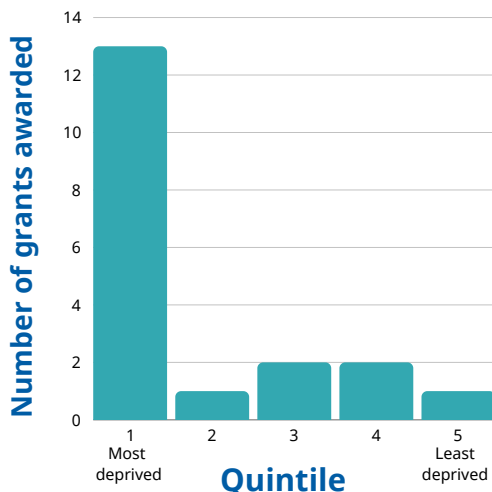
The Area Board invests in local community projects and initiatives that meet local priorities and deliver exceptional outcomes for residents. The Area Board aims to work in partnership to achieve maximum value for its investment.

Total Area Board Investment



The total amount invested in projects through additional community contribution, from fundraising, grants, services in kind or volunteering

Investment by deprivation quintile



Local Priorities

The Calne Area Board reviewed available local data and evidence and integrated this with local knowledge and community conversation to agree the following local priority themes. The Area Board has undertaken a series of more specific local actions to positively address them, including the key achievements below:

Supporting positive mental health and wellbeing in young people



We organised a Local Youth Network meeting at Kingsbury Green Academy and facilitated discussion with the Yr11 Citizenship class on a range of issues. Students provided presentations on issues such as body image, crime, Teen mental health and the environment. We invested in detached youth work through the Rise Trust and Open Blue Bus and provided funding for the Skate Series 2023 event.

Addressing climate change

We facilitated Environment working group meetings and shared resources and updates from the Wiltshire Council Climate Team. Schemes such as HUG2 Retrofit, Green Homes and Tree Wardens were promoted and discussions initiated on Information Boards / signage relating to Air Quality. We helped co-ordinate energy cafes across the community area in partnership with Wiltshire Wildlife Community Energy, which offered advice to help residents stay warm over winter and reduce energy bills.



Promoting wellbeing and combating social isolation in older and vulnerable people



We supported the Health and Social Care Forum and Voices group and funded projects such as the Men's Shed, Reconnecting Group and Celebrating Age to improve the quality of life of older and vulnerable residents. We organised a Dementia Awareness Day for residents, families and carers where visitors were given an opportunity to experience how dementia might feel, with a presenter led voyage inside the brain exploring basic neuroscience and promoting discussion around keeping our brains healthy.

Promoting and Supporting Initiatives to address Economic Inequalities

We visited Calne foodbank and helped to facilitate a partnership with Citizen's Advice Wiltshire to help maximise foodbank user income. We promoted the Household Support Fund and Wiltshire's FUEL Programme and invested in local organisations supporting low-income households. We shared information and opportunities with local businesses.



Addressing Highways/Transport Issues



The Local Highways and Footpath Infrastructure Group has met regularly over the past year finding solutions to problems and leading on improvements. Action has been taken and issues resolved following the Calne 'All Things Roads' meeting in November 2022. Projects continue to be worked on including speed limit reviews at Studley Crossroads, improvements to the footway surface at Quarr Barton and Safety on the A3102 route.

Engagements

The Calne Area Board works alongside other organisations to make things happen in the local community. These groups include the town council, voluntary and community groups, youth organisations, sports clubs and local charities.

The Area Board wouldn't be able to achieve what they do without these partners working on the ground with them. The Area Board hosts regular business meetings, engagement activities, events, surveys and working groups to stimulate and support local community action.

Area Board
Business meetings

4



Attendances

115

Area Board
working groups

4



Attendances

71

Engagements/
events/ activities

27



Attendances

408

Local Highways and Footpath Infrastructure group

The LHFIG is a sub group of the Calne Area Board, which deals specifically with highway issues. They aim to find solutions for local transport issues, such as road repairs, traffic problems, road layouts and parking. The amount allocated is dependent on the geographical size and population for the community area and the funding allocation is for capital expenditure and can be used to provide new and improved highway infrastructure.

LHFIG meetings

4



Attendances

40



£39,029

LHFIG projects
completed

13

